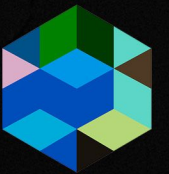




sample & hold - body 3D scanning

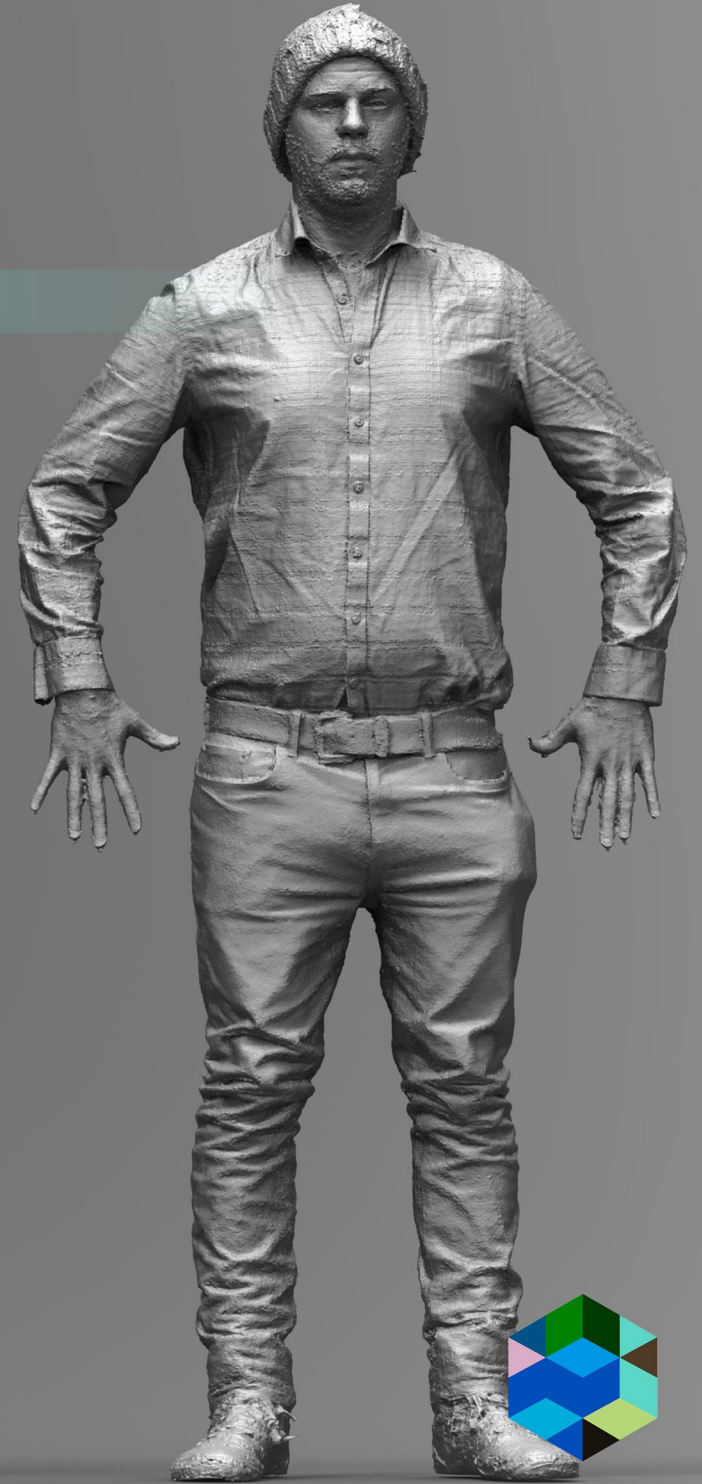




custom cross polarised photogrammetry



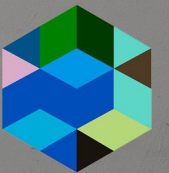
high resolution, full colour 3D scans



super fast capture for time sensitive jobs



fully portable rig to capture on location



'body'

'colour body'

'premium'

'character'

Number of triangles

8 million

12 million

12 million

12 million

Average edge length

0.7mm

0.6mm

0.6mm

0.6mm

Capture time

60sec

instant

instant

instant

water tight mesh

Yes

Yes

Yes

Yes

3D data format

OBJ

OBJ

OBJ

OBJ

Sculpt

No

No

Basic

High detail

Colour data

No

Yes

Yes

Yes

Retopologised quad mesh

No

No

Yes

Custom

UV unwrap

Auto

Auto

Yes

Yes

Displacement/Normal map

No

No

Yes

Yes



info@sampleandhold.co.uk

Chris - 07795557584

Sam - 07818061709

